



Service Manual

Microwave oven

MAX 18/WH/2

Model Version		Page
	MAX 18/WH/2 8538 018 99271	
	Introduction safety	2
	Technical data	3
	Spare part list	4
	Exploded view	5
	Wiring diagram	6

Introduction safety

INTRODUCTION

Before leaving the factory each oven is carefully checked.
It must, however, be installed and used correctly.

Despite all the steps taken to make the oven safe, the safety is dependent on the correct installation and the fact the user understands how to use and maintain the oven.

The information in this section should be used as a reminder that the oven is safe and that anyone who uses it must first read the instructions for use in order to be able to use the oven correctly and obtain best results.

SAFETY

To avoid injury to yourself and damage to the appliance always work to the following rules when servicing an oven.

Always disconnect the plug from the mains before starting work.

If there is no plug switch off the electric supply at the control box.

When you have finished servicing an oven before you reconnect it to the mains, make sure that:

- all the internal connections are correct
 - the wires are insulated and not touching the door or the cabinet or anything sharp
 - all the earth connections are electrically and mechanically sound
 - do not modify or anyway interfere with the safety devices built-in to the oven
- make sure that each replacement part you use conforms to the manufacturer's specifications

Do not start a repair if you have any doubt as to your ability to complete it.

CAUTION - MICROWAVE RADIATION

PERSONNEL SHOULD NOT BE EXPOSED TO THE MICROWAVE ENERGY WHICH MAY RADIATE FROM THE MAGNETRON, WAVEGUIDE OR ANTENNA IF THEY ARE IMPROPERLY USED OR CONNECTED. ALL INPUT AND OUTPUT MICROWAVE CONNECTIONS, WAVEGUIDES, FLANGES AND GASKETS MUST BE SECURE. NEVER OPERATE THE DEVICE WITHOUT A MICROWAVE ENERGY ABSORBING LOAD ATTACHED. NEVER LOOK INTO AN OPEN WAVEGUIDE OR ANTENNA WHILE THE DEVICE IS ENERGIZED. NEVER OPERATE AN OVEN WITH CABINET OFF WITHOUT MEASURING THE MICROWAVE LEAKAGE AROUND MAGNETRON AND VISIBLE MICROWAVE CONNECTIONS (WELDING JOINTS).

Do not operate the oven if the following conditions exist:

- the door does not close firmly against the door support because of the door being warped or the hinges damaged.
- The door trims or seals are damaged.
- If there is any visible damage to the oven.
- if the door does not close properly.

Avoid operating the oven if known components in the interlock system, oven door or microwave generating assembly are known defective. They must be replaced.

WARNING - HIGH VOLTAGE

IT IS POSSIBLE TO COME IN CONTACT WITH LETHAL HIGH VOLTAGE WHEN WORKING WITH HV TRANSFORMER, HV CAPACITOR AND MAGNETRON. THEREFORE NEVER TRY TO MEASURE THE HIGH VOLTAGE. ALWAYS TAKE UTMOST CARE WHEN PERFORMING ELECTRIC MEASUREMENTS INSIDE THE OVEN.

Technical data

Product dimensions

Height	356	mm
Width	392	mm
Depth	350	mm

Cavity dimensions

Height	149	mm
Width	290	mm
Depth	290	mm
Cavity volume	13	l
Turntable diameter	280	mm

Weight

Net	12	kg
Gross	13	kg

Electrical

Voltage	230	V
Frequency	50	Hz
Fuse	10	A
Current consumption	6	A

Power

Power consumption	1300	W
Output power MW	750	W
Grill	600	W
Maximum input power	1750	W
Microwave frequency	2450	W

Timer

electronic	30	min.
	5	power levels

Error codes

Certain fault conditions are indicated by an error code.
The following codes are implemented:

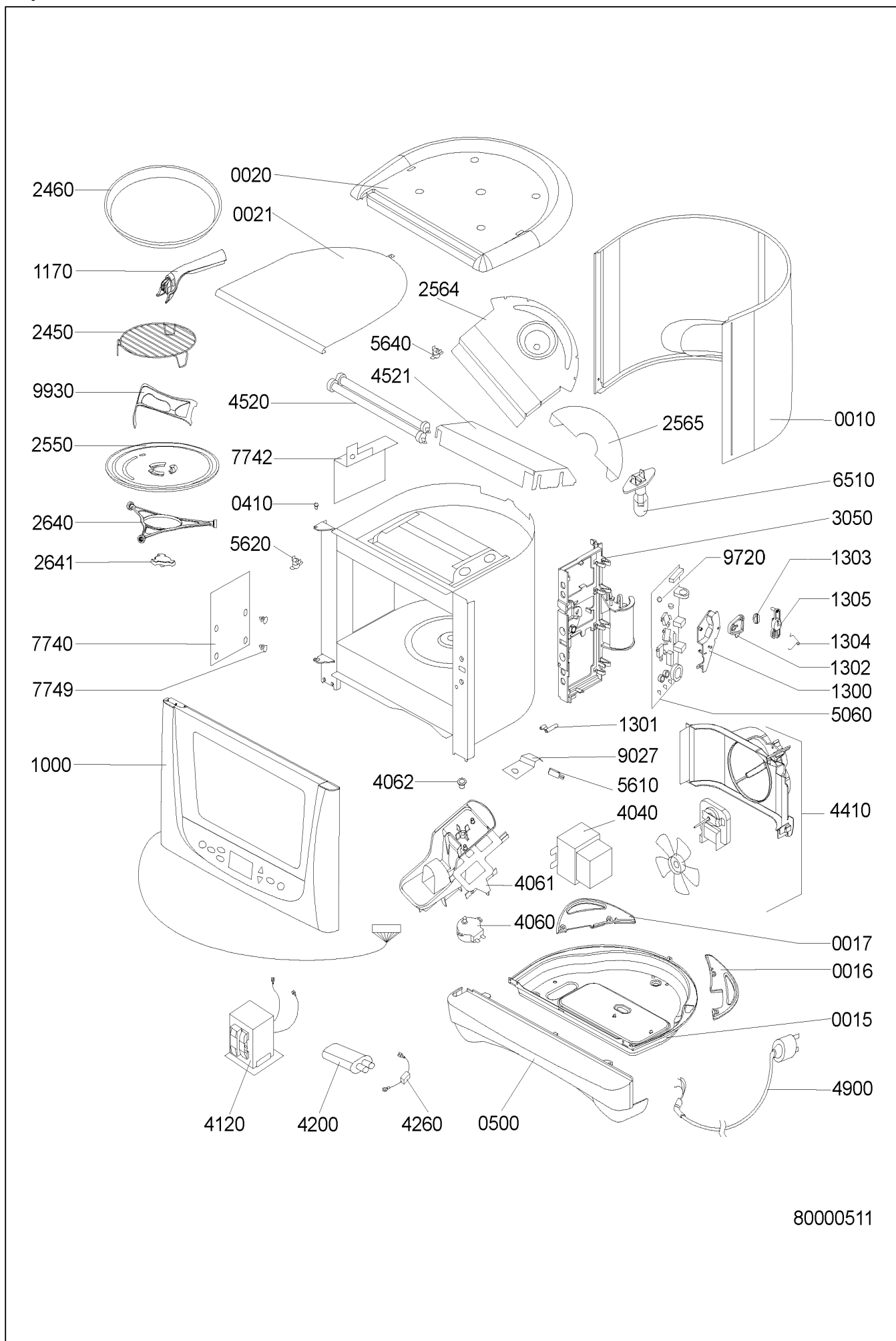
ERR 0	Convection temperature sensor fault. Not connected or short circuit.
ERR 1	Short circuit in the MW relay.
ERR 6	Weight sensor calibration has not been performed.
ERR 7	Humidity sensor is defect or has not been connected.
ERR 8	Impossible to write to E ² PROM.
ERR 9	Options have not been set.
ERR A	No wheel detected on weight sensor.
ERR B	No pulses from the weight sensor or <4267 Hz.
ERR C	Fuzzy temperature sensor fault. Not 19-41 °C.

Spare part list

Model MAX 18/WH/2
Service No. 853801899271
Version 853801899271

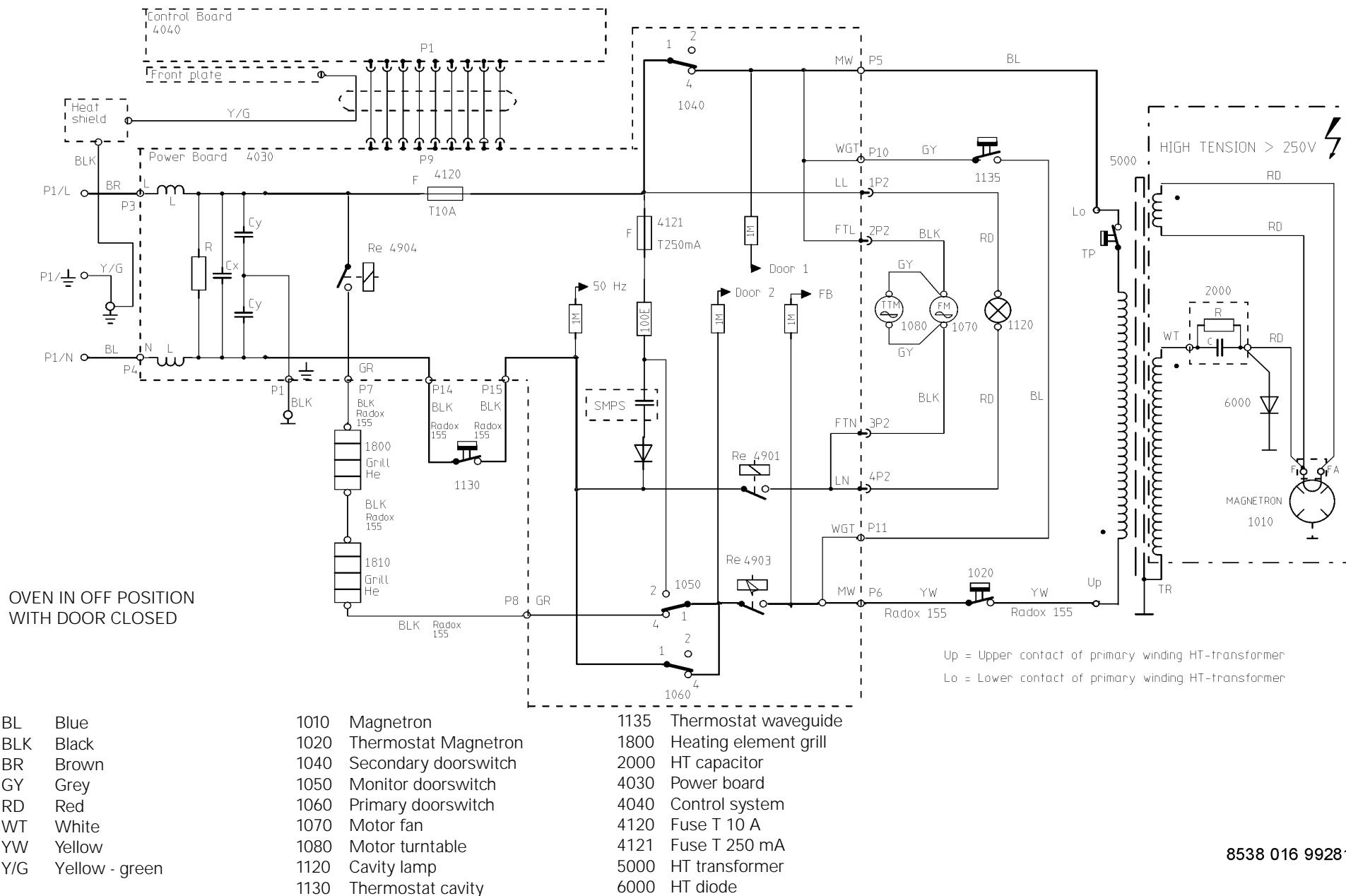
Pos. No.	12NC Code	Description
001 0	4812 440 11051	Cabinet outer WH
001 5	4812 462 79892	Plate, bottom
001 6	4812 462 79896	Frame distance piece right
001 7	4812 462 79897	Frame distance piece left
002 0	4812 325 58013	Frame top WH
002 1	4812 325 58014	Plate top
041 0	4812 492 48178	Hinge pin, top
050 0	4812 440 89071	Panel botton
100 0	4812 442 69449	Door cpl. WH
117 0	4812 498 78626	Handle for crisp plate
130 0	4812 270 18038	Holder switch
130 1	4812 492 58049	Pin
130 2	4812 460 38149	Cam plate
130 3	4812 492 58048	Clutch
130 4	4819 902 00756	Spring
130 5	4812 492 58047	Lever
245 0	4812 458 19216	Grill grid
246 0	4812 466 78424	Crisp plate
255 0	4812 466 78407	Glass plate turntable
256 4	4812 325 58012	Heat shield
256 5	4812 462 28602	Heat shield
264 0	4812 535 78069	Turntable ring assy.
264 1	4812 462 38161	Turntable drive
305 0	4812 256 98042	Bracket PCB
404 0	4819 131 58019	Magnetron
406 0	4812 361 58398	Motor turntable
406 1	4812 256 98044	Holder multi
406 2	4812 492 58051	Tube MW
412 0	4812 145 38032	Transformer HT
420 0	4812 121 58147	Capacitor HV
426 0	4812 218 38134	Diode HV
441 0	4812 361 18317	Motor blower cpl.
452 0	4812 259 28845	Heating element 115V
452 1	4812 259 28872	Heat shield grill
490 0	4812 321 18219	Cable, mains
506 0	4812 214 79203	Control board
561 0	4812 282 08641	Thermostat
562 0	4812 282 48271	Thermostat waveguide
564 0	4812 282 08642	Thermostat overheat
651 0	4819 134 28051	Lamp
774 0	4812 462 28268	Mica plate
774 2	4812 442 69428	Heat shield waveguide
774 9	4812 491 48028	Pin f. micaplate
902 7	4812 256 98043	Bracket thermostat
972 0	4812 252 28044	Fuse T250mA
993 0	4812 462 18271	Holder baby bottle

Exploded view



80000511

Wiring diagram



8538 016 99281