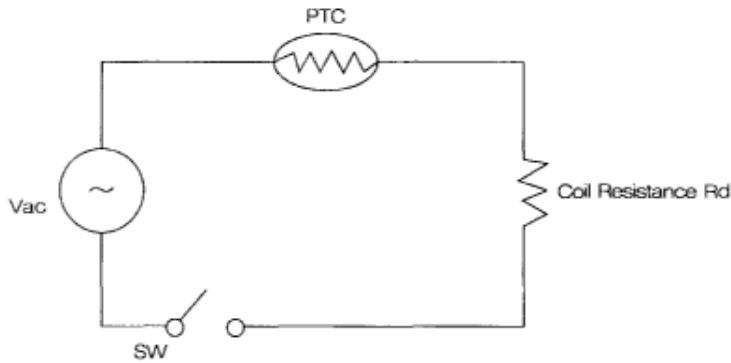


## APPLICATION CIRCUIT

This is a basic degaussing circuit, if residual currents requested zero, this circuit usually a switch. When necessary the switch is turned off.



### Current-Time Characteristic(Dynamic Characteristic)

Heating element (1) causes the resistance value of Element (2) to increase and make the stable current extremely small. Thus in many cases, the circuit is designed to be linked to the power switch so that degaussing is performed automatically when the power is turned on.

When excessing power is applied to the thermistor, a large current flow momentarily, then the self-heating feature of the thermistor causes the resistance value to increase and the current value to decrease. Thus, the thermistor controls degaussing function ideally.

