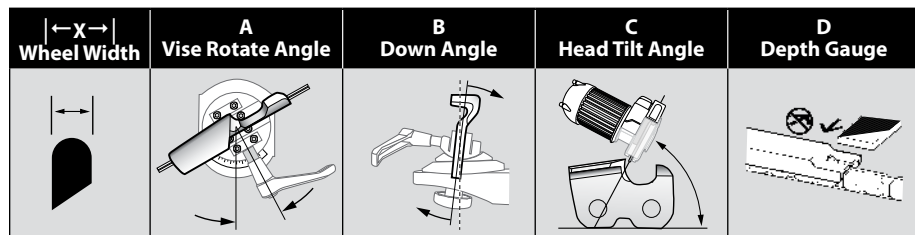


GRINDING ANGLES CHART



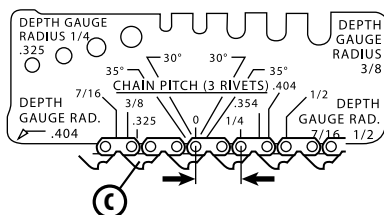
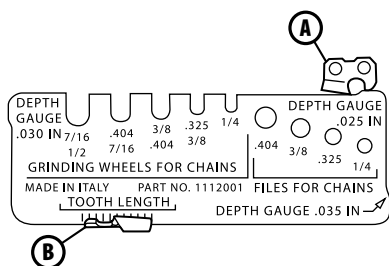
		X	A	B	C	D
MICRO CHISEL®	20-21-22BPX	3/16"	30°	10°	55°	.025" .65 mm
	25AP, 25A, 25F	1/8"	30°	0°	55°	.025" .65 mm
	27A, 27AX	3/16"	30°	10°	55°	.030" .75 mm
	95VPX	3/16"	30°	10°	55°	.025" .65 mm
ROUND GROUND CHISEL	20-21-22LPX	3/16"	25°	10°	55°	.025" .65 mm
	M20-21-22LPX	3/16"	25°	10°	55°	.025" .65 mm
	58, 59L, J	3/16"	25°	10°	55°	.025" .65 mm
	68JX, LX	3/16"	25°	10°	55°	.030" .75 mm
	68CJ, CL		45°	45°	-	.030" .75 mm
	72-73-75JGX, JPX, LGX, LPX, M72-73-75LPX	3/16"	25°	10°	55°	.025" .65 mm
SEMI-CHISEL	72-73-75V	3/16"	25°	10°	55°	.025" .65 mm
	72APX/72-73-75DPX	3/16"	35°	10°	55°	.025" .65 mm
	91PXL, 91VXL, M91VLX	1/8"	30°	0°	55°	.025" .65 mm
RIPPING CHAIN	27R, RA	3/16"	10°	10°	50°	.030" .75 mm
	72-73-75RD	3/16"	10°	10°	50°	.025" .65 mm
CHAMFER CHISEL™	90PX, 90S, 90SG	1/8"	30°	0°	55°	.025" .65 mm
	91P, 91PX, 91VG, 91VX, M91VX	1/8"	30°	0°	55°	.025" .65 mm

INSTRUMENTAL MEASUREMENTS

A Measure the gauge depth using the suitable shape.

B Measure the cutter length.

C Measure the chain pitch.



PREPARING FOR USE

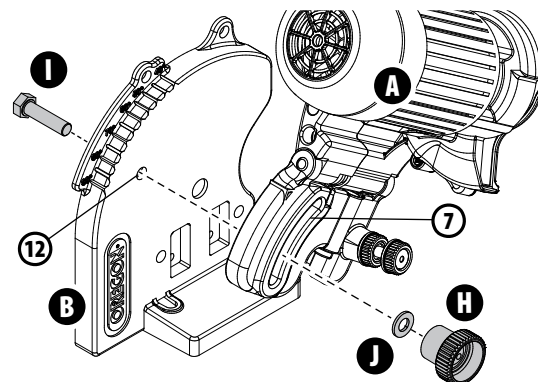
⚠ ATTENTION Do not install the machine at eye level. You are recommended to install it at a height of no more than 3.9 to 4.2 feet (1.2 – 1.3 m) from the floor. The machine can be bench mounted or wall mounted.

MOUNTING THE BASE UNIT - MOTOR UNIT

SECURING THE UPPER HOUSING / MOTOR UNIT

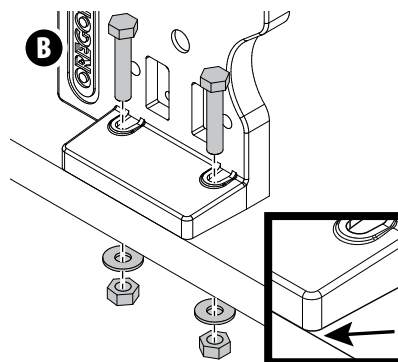
Insert the bolt (I) in the dedicated slot (7) in the motor unit (A) and through the mounting hole (12) in the support unit (B). Insert the washer (J) at the front and tighten the locking knob (H).

NOTE: you may need to depress the upper housing to ensure correct alignment.



BENCH-MOUNTING

Use two (2) appropriate bolts complete with washers and nuts (not supplied), inserted in the securing holes. Make sure you position the base unit hanging over the edge of the bench as shown in the detail.



WALL-MOUNTING

NOTE: assemble the upper housing / motor unit (A) to the base unit (B) before mounting to your wall.

Use four (4) appropriate bolts complete with washers (not supplied), inserted in the securing holes.

